



MANIRAIL

MEWP

TELESCOPIC HANDLER

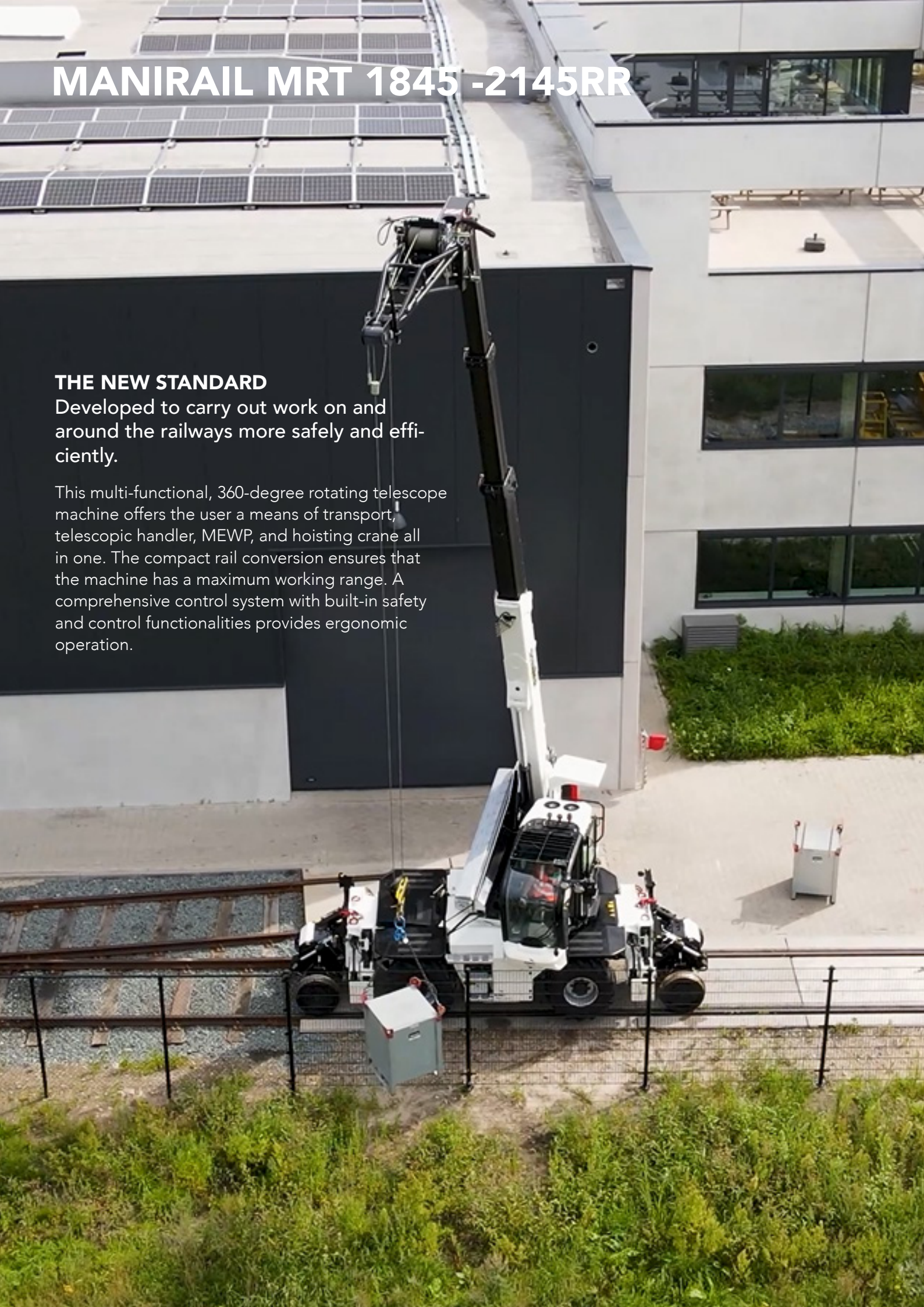
HOISTING CRANE

MANIRAIL MRT 1845 -2145RR

THE NEW STANDARD

Developed to carry out work on and around the railways more safely and efficiently.

This multi-functional, 360-degree rotating telescope machine offers the user a means of transport, telescopic handler, MEWP, and hoisting crane all in one. The compact rail conversion ensures that the machine has a maximum working range. A comprehensive control system with built-in safety and control functionalities provides ergonomic operation.



EFFICIENT ON TRACK

The four-wheel drive provides a maximal traction when driving and braking on railways. The machine operates up to a maximum slope of 6%.

The rail conversion also has a level adjustment function, which makes it possible to work safely even from tracks with significant cant (180mm).

Almost all standard Manitou tools can be integrated in the rail conversion:

- | | |
|------------------------------------|----------------|
| • Fork carriage | 4000 kg |
| • Rotating forks | 2000 kg |
| • Hoisting winch | 2000 or 3000kg |
| • Hoisting jib | 1200 - 4000 kg |
| • Aerial working platform with jib | 300 kg |
| • PSE4400 working platform | 850 kg |



MULTIFUNCTIONAL

The MANIRAIL makes it possible to use a number of different work platforms and other tools. The machine has an integrated, adjustable height and rotating limiter. Additionally, it uses the original RCI so that other original Manitou tools can be added to the machine at a later stage. Controls can be easily switched from the cab to the work platform. From the basket, it is possible to have the machine go up to ten kilometres per hour. During work, the speed of the machine is limited to five kilometres per hour.



TECHNICAL SPECIFICATIONS

• Max. rail speed	19 km/h
• Max. road speed	30 km/h
• Workingspeed	1-2 km/h
• Lifting height	14/ 16/ 18 m
• Railtrack	1435 mm / 1485 mm
• Railwheels	640 mm A-C-S1002-MIX
• Weight	20t
• Max. weight	24t
• Railtrailer	25t
• Brakes	hydraulic or air
• Lifting capacity	4.500kg
• Clearance profile	G1-G2
• Max. slope	workmode 6%
• Max. cant	transport 8°/200 mm
• Max. cant	workmode 8°
• Max. cant	work and transport: 8°
• Max. windspeed	12,5 m/s
• Persons	2 (cabin)
• Type approval	EN 15746 1-2 & EN 280

STANDARD

- Proportional hydraulic control
- 360° endless rotation
- Swivel and level adjustment function
- Height and rotating limiter
- Load control (RCI)
- Integrated camerasystem
- 4 wheeldrive
- Speedlimiter
- Passengerseat
- Changeable railwheels (Normal, Tram, and Meter)
- Automatic raillights
- Heavy duty air tyres
- Oscillating axle for road use
- Locking differentiaall
- 24V Emergancypump
- Emergency and environmental kit
- Air horn
- Warning light (RCI)
- Clock and hour meter
- Lifting eyes